

CARBON REDUCTION PLAN

FOR



Prepared by:



Ethical Healthcare Consulting
Carbon Emissions Report

Table of Contents

1 Net Zero Commitment 3

2 Background Information 4

3 Carbon Emissions Overview 6

4 Analysis by Scope 6

5 Emissions by Activity 7

6 Intensity Metric Analysis 8

7 Emissions Reductions Targets 8

8 Carbon Reduction Actions 9

9 Emissions Data 10

10 Standard and Methodology Used 11

11 Data Quality / Confidence 11

12 Declaration and Sign Off..... 11

13 Glossary 12

Ethical Healthcare Consulting
Carbon Emissions Report

1 Net Zero Commitment

Ethical Healthcare Consulting recognises the importance of making a full and lasting commitment to reducing the greenhouse gas emissions from our activities, in support of the wider commitment of the world to limit global temperature increases and the impact on the planet.

We commit to the following:

- 1. For our company to achieve Net Zero in line with the Science Based targets set out by the UNFCCC i.e., to achieve Net Zero no later than 2050 and target a 50% reduction in emissions by 2030.
- 2. To set realistic short- and long-term targets that are designed to achieve our Net Zero commitments.
- 3. To report the total Greenhouse Gas emissions of our business, at a minimum, on an annual basis.

	Year	Earlier Year if Possible
Commitment to be Net Zero	2050	2045*
50% Emissions Reduction	2030	

Ethical Healthcare Consulting Carbon Emissions Report

2 Background Information

2.1 Company

Ethical Healthcare Consulting is a Limited Company registered in England, company number 13552449, with its office address at 148 Rose Bowl, Portland Crescent, Leeds, England, LS1 3HB.

Ethical Healthcare Consulting is a company that provides digital health consultancy services to the NHS and organisations across the healthcare sector.

Ethical Healthcare is an advisory consultancy with a renowned team that has extensive experience in digital health from organisations across the health service.

These individual subject matter experts are, collectively, a powerful force for change in digital transformation.

Ethical Healthcare's sole purpose is to deliver positive and meaningful social impact on key societal challenges in the areas of health, wellbeing, and welfare. We also believe that true partnership with healthcare providers and suppliers can only be achieved through alignment of values. Our values are at the core of everything we do, the behaviours we demonstrate and the improvement and changes we seek to deliver to our partners. The combination of our values and not for profit ethos, affords us the ability to go above and beyond to support healthcare provision every way we can. We offer enhanced value for money and establish a genuine relationship with our partners, one in which there is no agenda other than improving patient care.

Reporting Period	Previous Period May 2022 – April 2023	Current Period May 2023 – April 2024
Industry	Healthcare Consultancy	Healthcare Consultancy
No. of Staff	11	17
No. of Premises Owned	0	0
No. of Premises Leased	0	0
No. of Company Vehicles - Owned	0	0
No. of Company Vehicles - Leased	0	0

Ethical Healthcare Consulting
Carbon Emissions Report

2.2 Current Reporting Period

May 2023 – April 2024

2.3 Organisational Boundary

There are 3 different approaches to measuring emissions, as defined by the GHG Protocol. This report has been constructed using the **Operational Control Approach**, considering the requirements of each potential approach.

Approach	Description	Approach Taken
Operational Control	The organisation has operational control over an operation if it or one of its subsidiaries has the full authority to introduce and implement its operating policies at the operation.	✓
Financial Control	The organisation has financial control over the operation if it has the ability to direct the financial and operating policies of the organisation with a view to gaining economic benefits from its activities.	
Equity Share	The organisation accounts for GHG emissions from operations according to its share of equity in the operation.	

2.4 Benchmark Year

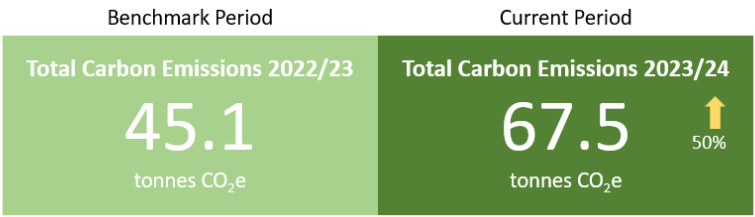
The organisation’s benchmark year is from **May 2022 – April 2023**. This is the second time the organisation has measured and reported on its carbon emissions.

2.5 Methodologies Used

Throughout this report all methodologies used are explained within the relevant sections.

Ethical Healthcare Consulting
Carbon Emissions Report

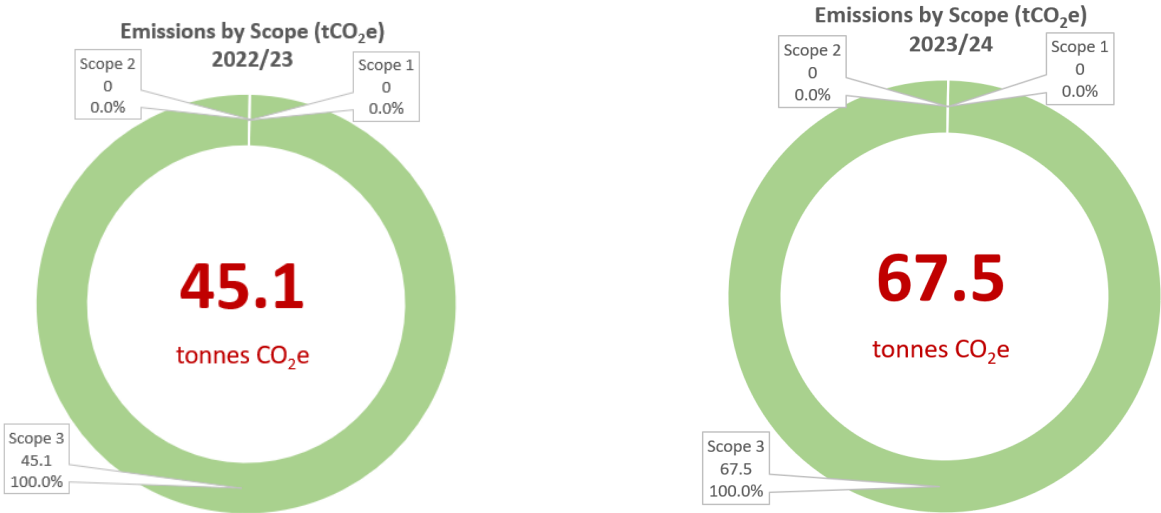
3 Carbon Emissions Overview



The total calculated emissions for the business for the period 2023/24 are 67.5 tCO₂e. This is due to the increasing measurement of Scope 3 emissions in the reporting period.

The Company will aim to measure an increasing amount of Scope 3 emissions and is committed to reducing their emissions across all scopes.

4 Analysis by Scope

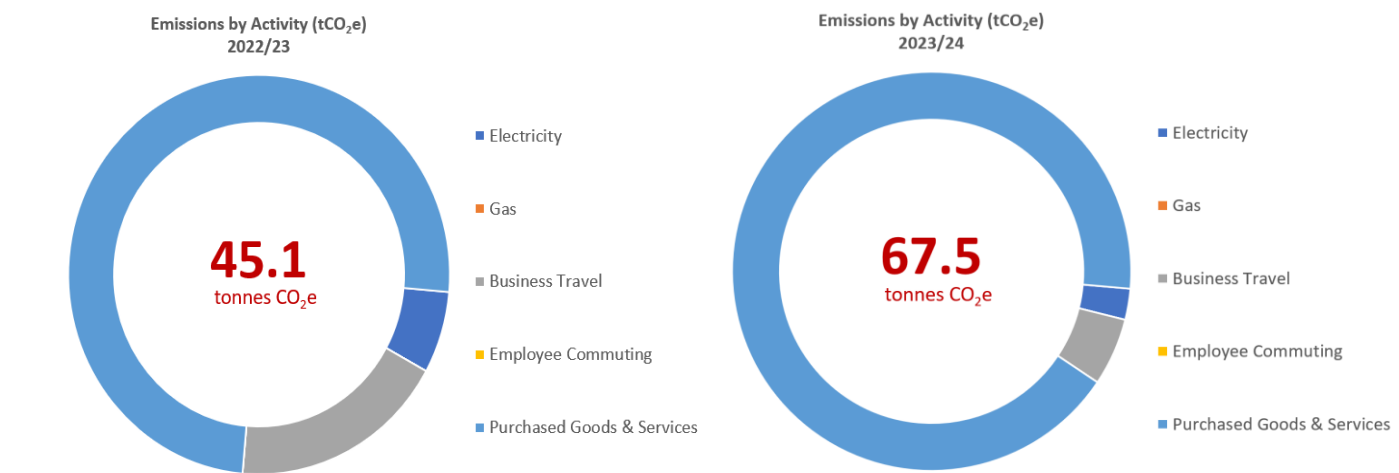


Scope	Description	tCO2e	%
Scope 1	Ethical Healthcare have no Scope 1 Emissions as they do not consume any fuels in any offices or company vehicles.	0.0	0.0%
Scope 2	Ethical Healthcare have no Scope 2 Emissions as they do not consume any indirect gas emissions.	0.0	0.0%
Scope 3	Scope 3 emissions include: <ul style="list-style-type: none">Electricity (Working from Home)Business TravelHotel StaysCourier CostsTrain Travel CostsSupplier Costs	67.5	100%
TOTAL		67.5	100%

Reported Scope 3 emissions may increase in future years as more detailed data and information becomes available.

Ethical Healthcare Consulting
Carbon Emissions Report

5 Emissions by Activity




Data Details		2022-2023	2023-2024		
Emission Type	Scope	tCO ₂ e	tCO ₂ e	Data Source	Data Confidence
Energy					
Gas	1	-	-	N/A - No Gas	N/A
Electricity	2	-	-	N/A - No Electricity	N/A
Electricity (Working from Home)	3	3.0	1.7	Employee Survey	Medium
Transmission & Distribution	3	-	-	N/A - No Electricity	N/A
		3.0	1.7		
Business Travel					
Car - Diesel	3	-	0.7	Mileage data	High
Car - Petrol	3	-	0.7	Mileage data	High
Car - Average	3	4.5	0.5	Mileage data	High
Taxi and Rail	3	0.7	-	Mileage data	High
Planes Travel	3	3.1	1.8	Mileage data	High
		8.3	3.7		
Employee Commuting					
All Employee Commuting	3	-	-	N/A - No Employee Commuting	N/A
		-	-		
Other Emissions Calculated					
Hotel Stays (Portugal)	3	-	0.2	EEIO Spend Analysis	Medium
Hotel Stays (London)	3	0.1	0.3	EEIO Spend Analysis	Medium
Hotel Stays (Outside London)	3	0.7	0.6	EEIO Spend Analysis	Medium
Courier Costs	3	-	0.1	EEIO Spend Analysis	Medium
Train Travel Costs	3	-	7.2	EEIO Spend Analysis	Medium
Supplier Costs	3	33.0	53.7	EEIO Spend Analysis	Medium
		33.8	62.1		
TOTAL		45.1	67.5		

Ethical Healthcare Consulting
Carbon Emissions Report

6 Intensity Metric Analysis

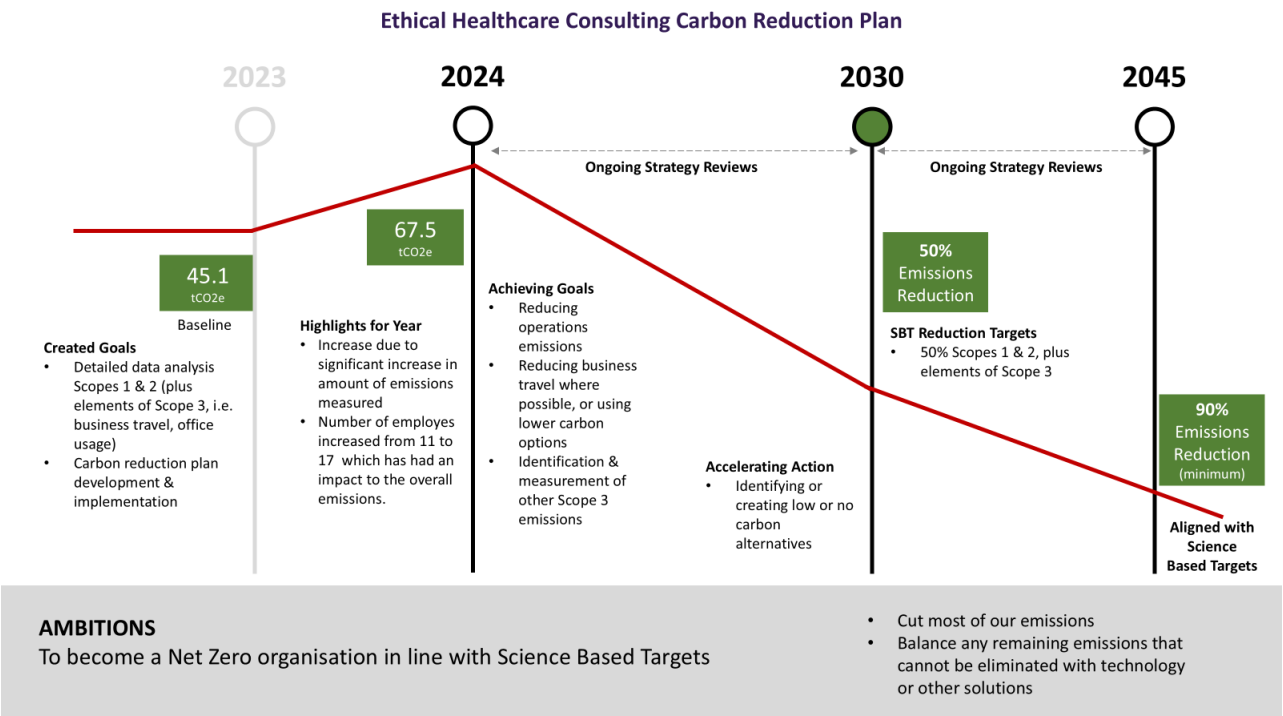
Intensity metrics help normalise emissions data, taking into account variations in production levels or activity volumes. This allows for a more accurate assessment of emission trends over time, regardless of changes in business operations. The initial intensity metrics for the company are below and will be used for comparative purposes in following years.

Intensity Metrics			
 Per Employee	2022/23 tCO2e	2023/24 tCO2e	Change
	Scopes 1, 2 & 3	5.5	4.2

The chosen intensity metrics shows a carbon emissions value of **4.2 tCO2e per employee** which is a reduction of 31% from the benchmark year. This is despite the overall carbon increasing by 50%. The business headcount averaged 16 people during the reporting year.

7 Emissions Reductions Targets

The following graph summarises the carbon emissions reduction targets.



Ethical Healthcare Consulting
Carbon Emissions Report


8 Carbon Reduction Actions

Ethical Healthcare Consulting will develop the following initiatives that will support the company’s strategies to meet Science Based Targets:

Area of Focus	Initiative
Engagement of Team	To engage the entire team throughout the organisation in the Net Zero transition plan and to encourage staff to support lower carbon ideas, opportunities, and activities.
Reduce Reliance on Spend Based Data	To review major emissions based on spend and develop more accurate emissions data together with suppliers.
Business Travel Emissions	To review a sustainable travel policy encouraging use of public transport and lower carbon options when practical to do so.
Supply Chain Review	To carry out regular reviews of supply chain partners and introduce a sustainable supply chain policy over time.
Energy Efficiency of Site	Introducing education systems to help people manage energy consumption, in particular in relation to work, in their homes. Investigate improved waste recyclability options.

Signed on behalf of Ethical Healthcare Consulting

Name: Judy Smith

DocuSigned by:

BE25CB1E2C8B401...
Position: COO

Date: 25 November 2024

Ethical Healthcare Consulting Carbon Emissions Report

9 Emissions Data

The data contained in the table below represents total emissions calculated and is consistent with SECR requirements. All sources of emissions that have been measured are included in the totals below. Emissions from key activities are summarised in the previous sections.

	Previous Reporting Year May 22 - Apr 23	Current Reporting Year May 23 - Apr 24
Energy consumption used to calculate emissions Electricity Scope 2 - UK and Offshore (kWh)	14,924	8,424
Energy consumption used to calculate emissions – Global, excluding UK and Offshore (kWh)	N/A	N/A
Basis of Energy reporting (Location or Market)*	Location	Location
% of total energy sourced from certified renewable sources	0%	0%
Emissions associated with energy consumption - UK, Offshore and Global (tCO ₂ e)	0.0	0.0
Emissions from activities for which the company is responsible including combustion of fuel and operation of facilities - Scope 1 (tCO ₂ e)	0.0	0.0
Emissions from purchase of electricity, heat, steam and cooling purchased for own use - Scope 2 (tCO ₂ e)	0.0	0.0
Total Scope 1 and 2 Emissions (tCO₂e)	0.0	0.0
Emissions from upstream activities out of operational control - Scope 3 (tCO ₂ e)	45.1	67.5
Emissions from use of sold products and services out of operational control - Scope 3 (tCO ₂ e)	None included	None included
Total Gross Scope 3 Emissions (tCO₂e)	45.1	67.5
Total Scope 1, 2 and 3 Emissions (tCO₂e)	45.1	67.5
Intensity ratio tCO ₂ e (gross Scope 1, 2 and 3) per employee	5.5	4.2
Carbon offsets (tCO ₂ e)	0.0	0.0
Total Annual Net Emissions (tCO₂e)	45.1	67.5

* A location-based method reflects the average emissions intensity of grids on which energy consumption occurs (using mostly grid-average emission factor data). A market-based method reflects emissions from electricity that companies have purposefully chosen.

Ethical Healthcare Consulting Carbon Emissions Report

10 Standard and Methodology Used

Ethical Healthcare Consulting categorises its Greenhouse Gas (GHG) Emissions as Scope 1, 2 or 3 as referred to in the WBCSD – WRI Greenhouse Gas Protocol (revised edition, dated March 2014). Emissions in Carbon Dioxide equivalent (CO₂e) for all scopes are calculated using the conversion factors listed in DESNZ Greenhouse Gas Conversion Factors for the relevant 12-month period over which the carbon emissions are calculated. Procured renewable electricity and gas is calculated in accordance with the WBCSD – WSI Scope 2 Guidance on procured renewable energy (2015).

11 Data Quality / Confidence

The data used to generate this report has been collected from various sources from both within the company and using assumptions gathered by Net Zero International. These emissions have been converted to CO₂e using GHG Protocol and DESNZ frameworks and conversion factors for the relevant period.

12 Declaration and Sign Off

This Carbon Reduction Plan has been completed in accordance with SECR, PPN 06/21 and associated guidance and reporting standard for Carbon Reduction Plans.

Emissions have been reported and recorded in accordance with the published reporting standard for Carbon Reduction Plans and the GHG Reporting Protocol corporate standard and uses the appropriate Government emission conversion factors for greenhouse gas company reporting.

Scope 1 and Scope 2 emissions have been reported in accordance with SECR requirements, and the required subset of Scope 3 emissions have been reported in accordance with the published reporting standard for Carbon Reduction Plans and the Corporate Value Chain (Scope 3) Standard.

This Carbon Reduction Plan has been reviewed and agreed by the board of directors (or equivalent management body).

Signed on behalf of Net Zero International

Name: **Chris Williams**



Position: **Chief Commercial Officer**

Date: 19/11/24

Ethical Healthcare Consulting Carbon Emissions Report

13 Glossary

Benchmark Data	The chosen 12-month period that sets the calculated emissions that need to be mitigated and/or offset.
Carbon Reduction	Reduction in measured CO ₂ e emissions
Carbon Reduction Plan	Plan to reduce CO ₂ e emissions over a period of time, updated annually
Carbon Emissions (Gross)	CO ₂ e emissions from Company activities
Carbon Emissions (Net)	CO ₂ e emissions from Company activities minus verified carbon offsets the Company purchases
Carbon Neutral	When emissions are fully offset including those emissions that could be mitigated.
Carbon Offsets	A removal or reduction of carbon emissions through a verified scheme.
CO₂e	All greenhouse gases expressed in terms of Carbon Dioxide equivalent (CO ₂ e) for consistency of reporting.
DESNZ	Department of Energy Security and Net Zero (https://www.gov.uk/government/collections/government-conversion-factors-for-company-reporting)
EEIO	Environmentally Extended Input Output – Emissions estimated on spend https://ghgprotocol.org/
Organisational Boundaries	GHG Protocol Organisational Boundaries https://ghgprotocol.org/sites/default/files/standards/ghg-protocol-revised.pdf
GHG Protocol	Greenhouse Gas Protocol https://ghgprotocol.org/
Greenhouse Gases	Carbon Dioxide (CO ₂), Methane (CH ₄), Nitrous Oxide (N ₂ O), Chlorofluorocarbons (CFCs and HCFCs), Hydrofluorocarbons (HFCs), Perfluorocarbons (PFCs), Sulphur Hexafluoride (SF ₆)
Greenhouse Gas Conversion Factors	Annually published conversion factors normally published by relevant government departments. Converts activity into CO ₂ e emissions.
Greenhouse Gas Emissions (GHG)	Gases in the atmosphere that absorb and radiate heat
Intensity Metric/Ratio	A metric that measures carbon emissions per relevant unit of activity in a business.
Market Reporting v Location Reporting	Market is based on specific tariffs. Location is based on the country from which you are reporting.
Net Zero	GHG emissions are mitigated and those that cannot are offset
Renewable Tariff	An energy tariff that is 100% powered by renewable energy and is certified.
SBT	Science Based Targets – reducing emissions by 50% by 2030 and by 90% by 2050 and offsetting the remaining amount.
Scope 1	The fuels that are burnt (gas, transport the company owns, refrigerant gases)
Scope 2	The energy that is bought (electricity from the grid, purchased heat)
Scope 3	Emissions embedded in everything a company buys and emitted as a consequence of everything a company sells.
SECR	Streamlined Energy and Carbon Reporting
tCO₂e	Metric tonnes of CO ₂ equivalent emitted.
WBCSD	World Business Council for Sustainable Development https://www.wbcsd.org/
WRI	World Resource Institute https://www.wri.org/